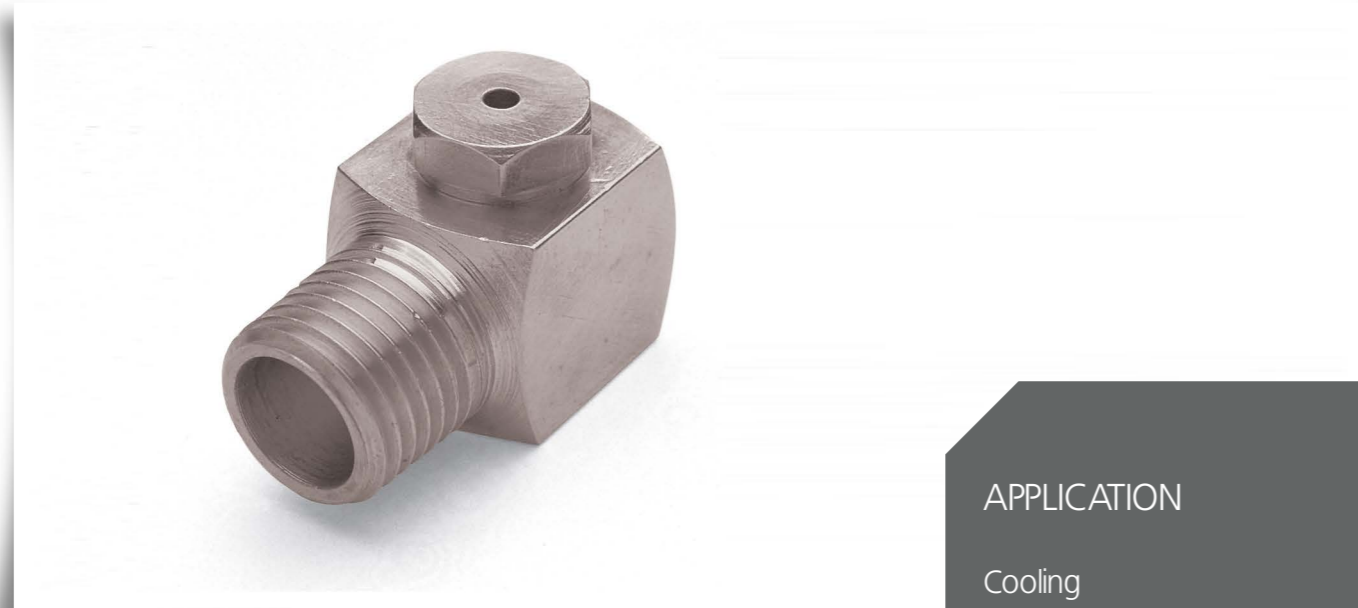


# METAL TANGENTIAL FULL CONE NOZZLE

UNIFORM DISTRIBUTION  
SPRAYING AT 90° TO THE INLET



## APPLICATION

Cooling  
Rinsing  
Washing  
Food Processing  
Fire Suppression  
Gas Scrubbing, Washing  
and Cooling

## FEATURES

Two piece nozzle body with  
internal swirl vane  
Uniform distribution of spray  
droplets  
Spray trajectory is 90  
degrees to the inlet  
Useful nozzle design for  
installations with space  
limitations

## DESCRIPTION

The metal tangential full cone nozzle produces a full cone spray pattern that sprays at 90° to the inlet of the nozzle. A two piece nozzle body with internal swirl cone produces the full cone spray pattern. The nozzle has a square body for easy installation. Male and female threaded connections available.

## MATERIALS AVAILABLE

Brass  
Stainless Steel  
Other materials available on request

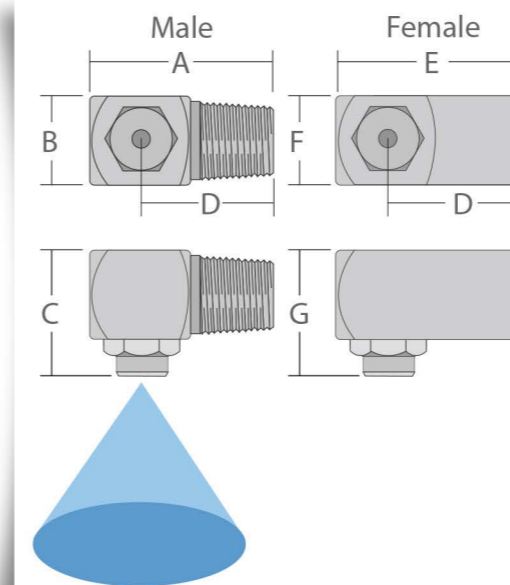
## SPRAY ANGLES AVAILABLE

70°, 110°

## ORDERING EXAMPLE

Metal Tangential Full Cone Stainless Steel 1/4" 6.5-70°

Nozzle Reference	Thread Connections (BSP)			Flow (L/min) @ Pressure (bar)						
	1/8"	1/4"	3/8"	1.0	2.0	3.0	4.0	5.0	7.0	10.0
2	✓			0.91	1.29	1.58	1.82	2.04	2.41	2.88
3	✓			1.37	1.93	2.37	2.74	3.06	3.62	4.32
3.9	✓			1.78	2.51	3.08	3.56	3.98	4.70	5.62
4.3	✓			1.96	2.77	3.40	3.92	4.38	5.19	6.20
5	✓			2.28	3.22	3.95	4.56	5.10	6.03	7.21
6.5		✓		2.96	4.19	5.13	5.93	6.63	7.84	9.37
8	✓			3.65	5.16	6.32	7.29	8.16	9.65	11.53
10		✓		4.56	6.45	7.90	9.12	10.19	12.06	14.42
12.5		✓		5.70	8.06	9.87	11.40	12.74	15.08	18.02
14		✓		6.38	9.03	11.05	12.76	14.27	16.89	20.18
15			✓	6.84	9.67	11.84	13.68	15.29	18.09	21.62
20			✓	9.12	12.86	15.79	18.24	20.39	24.12	28.83



## DIMENSIONS

Pipe Size BSP	Male (mm)				Female (mm)			
	A	B	C	D	E	F	G	H
1/8"	27.0	16.0	28.5	22.5	27.0	16.0	28.5	22.5
1/4"	28.0	16.0	28.5	20.0	28.0	16.0	28.5	20.0
3/8"	35.0	20.0	32.5	25.0	35.0	20.0	32.5	25.0